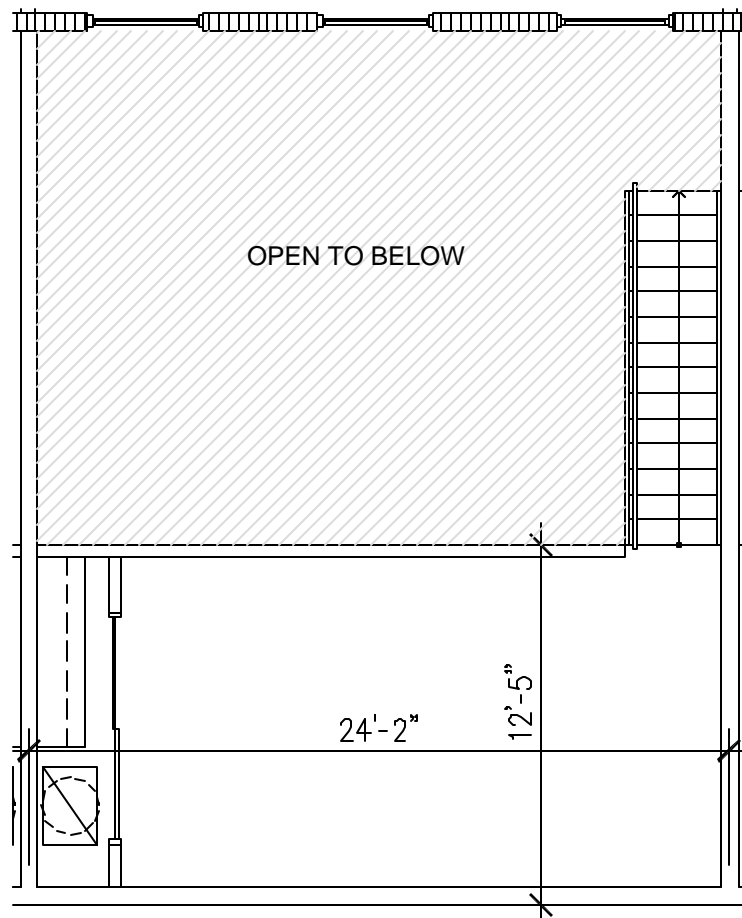


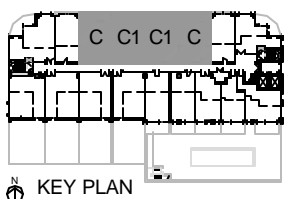
Ground Level



Mezzanine Level

LOFT C:		
ENTRY LEVEL:	721 S.F.	67.0 S.M.
MEZZ. LEVEL:	290 S.F.	26.9 S.M.
<b>TOTAL:</b>	<b>1011 S.F.</b>	<b>93.9 S.M.</b>
BALCONY:	135 S.F.	12.5 S.M.

LOFT C1:		
ENTRY LEVEL:	745 S.F.	69.2 S.M.
MEZZ. LEVEL:	300 S.F.	27.9 S.M.
<b>TOTAL:</b>	<b>1045 S.F.</b>	<b>97.1 S.M.</b>
BALCONY:	143 S.F.	13.3 S.M.

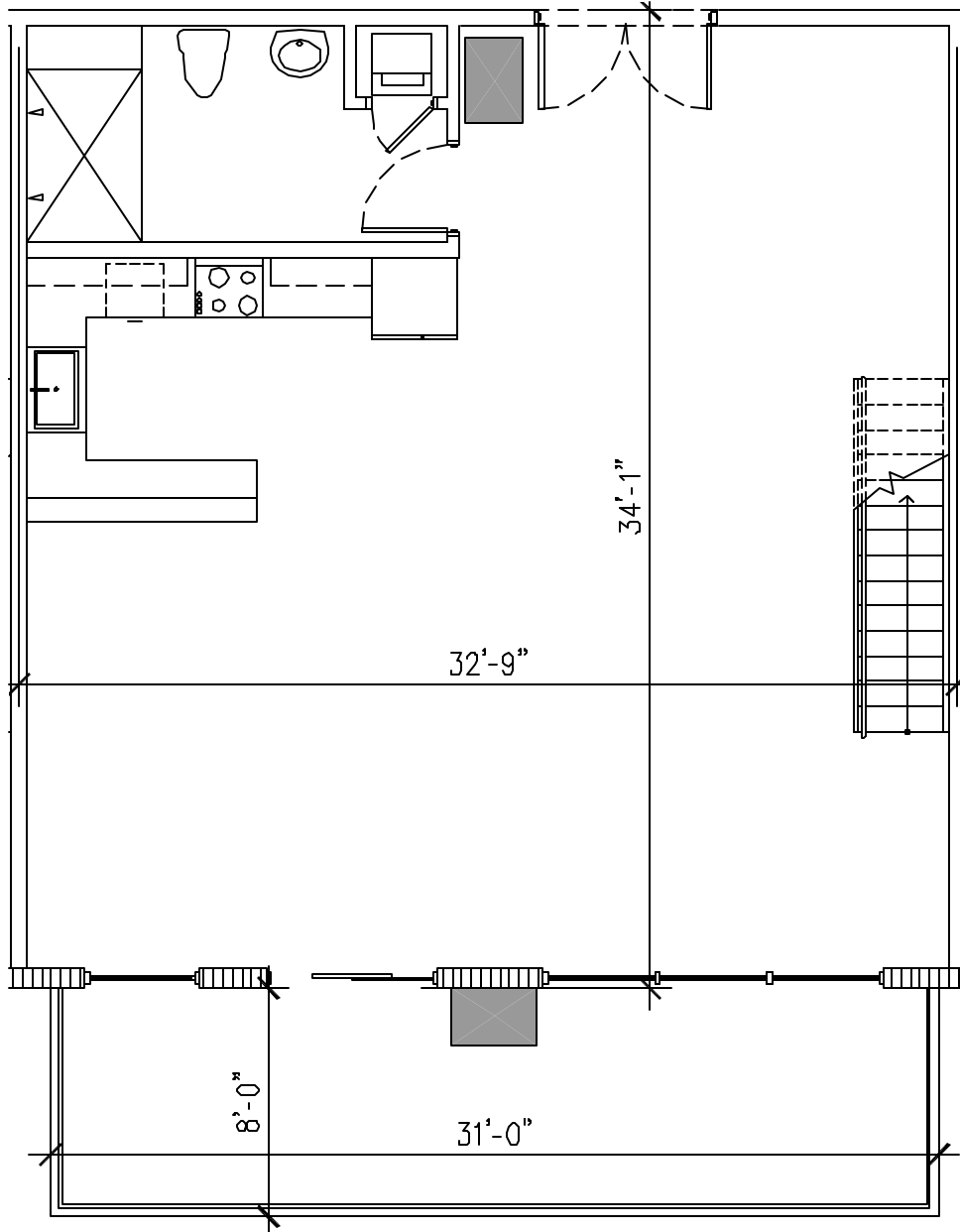


KEY PLAN

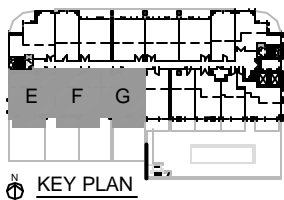
## The Filling Station

### LOFT C & C1

The stated dimensions are measured to the exterior boundaries of the exterior walls and the centerline of interior dividing walls and in fact vary from the dimensions that would be determined by using the description and definition of the "Unit" set forth in the Declaration (which generally only includes the interior airspace between the perimeter walls and excludes interior structural components). All dimensions are approximate, and all floor plans and development plans are subject to change.

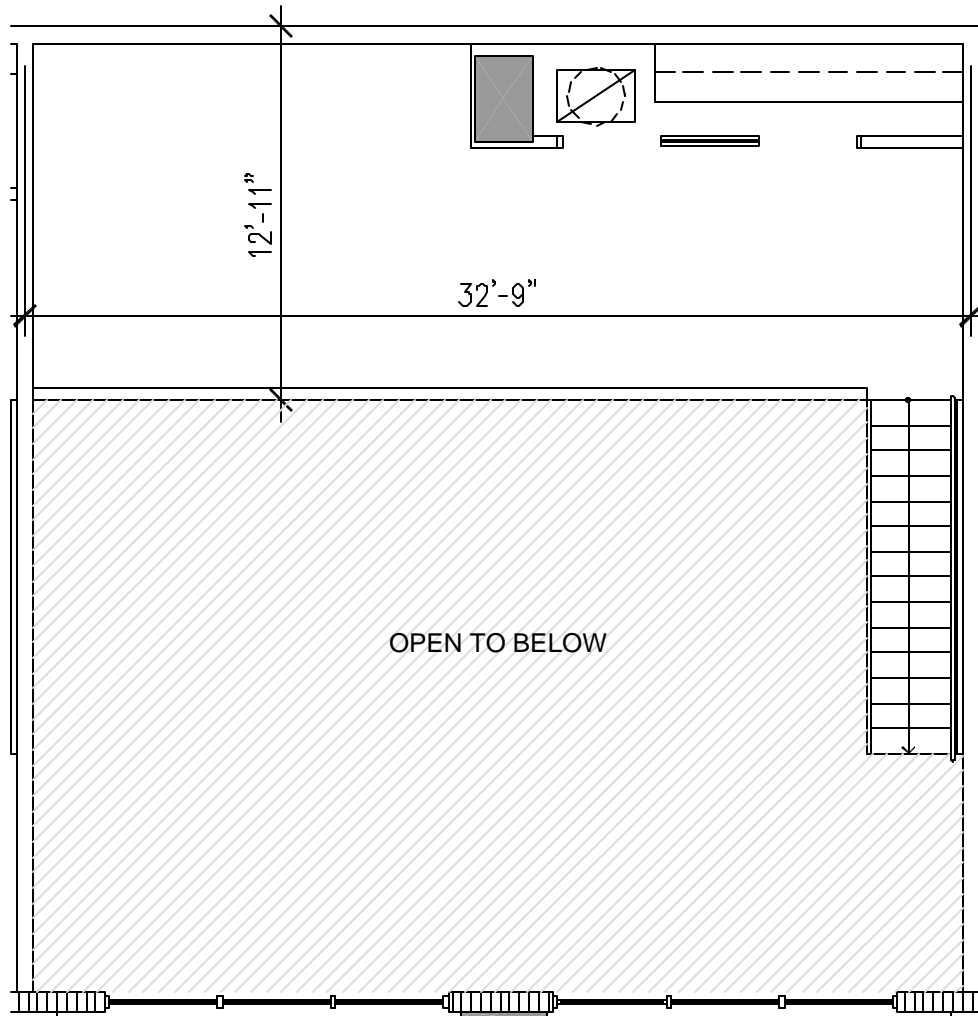


Ground Level



## The Filling Station LOFT E, F & G

The stated dimensions are measured to the exterior boundaries of the exterior walls and the centerline of interior demising walls and in fact vary from the dimensions that would be determined by using the description and definition of the "Unit" set forth in the Declaration (which generally only includes the interior airspace between the perimeter walls and excludes interior structural components). All dimensions are approximate, and all floor plans and development plans are subject to change.

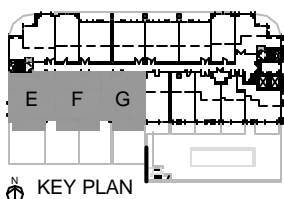


Mezzanine Level

<b>LOFT E:</b>		
ENTRY LEVEL:	1125 S.F.	104.5 S.M.
MEZZ. LEVEL:	403 S.F.	37.4 S.M.
<b>TOTAL:</b>	<b>1528 S.F.</b>	<b>142.0 S.M.</b>
BALCONY:	182 S.F.	16.9 S.M.

<b>LOFT F:</b>		
ENTRY LEVEL:	1121 S.F.	104.1 S.M.
MEZZ. LEVEL:	423 S.F.	39.3 S.M.
<b>TOTAL:</b>	<b>1544 S.F.</b>	<b>143.4 S.M.</b>
BALCONY:	251 S.F.	23.3 S.M.

<b>LOFT G:</b>		
ENTRY LEVEL:	1100 S.F.	102.2 S.M.
MEZZ. LEVEL:	415 S.F.	38.6 S.M.
<b>TOTAL:</b>	<b>1515 S.F.</b>	<b>140.8 S.M.</b>
BALCONY:	178 S.F.	16.5 S.M.



**The Filling Station  
LOFT E, F & G**

The stated dimensions are measured to the exterior boundaries of the exterior walls and the centerline of interior dividing walls and in fact vary from the dimensions that would be determined by using the description and definition of the "Unit" set forth in the Declaration (which generally only includes the interior airspace between the perimeter walls and excludes interior structural components). All dimensions are approximate, and all floor plans and development plans are subject to change.