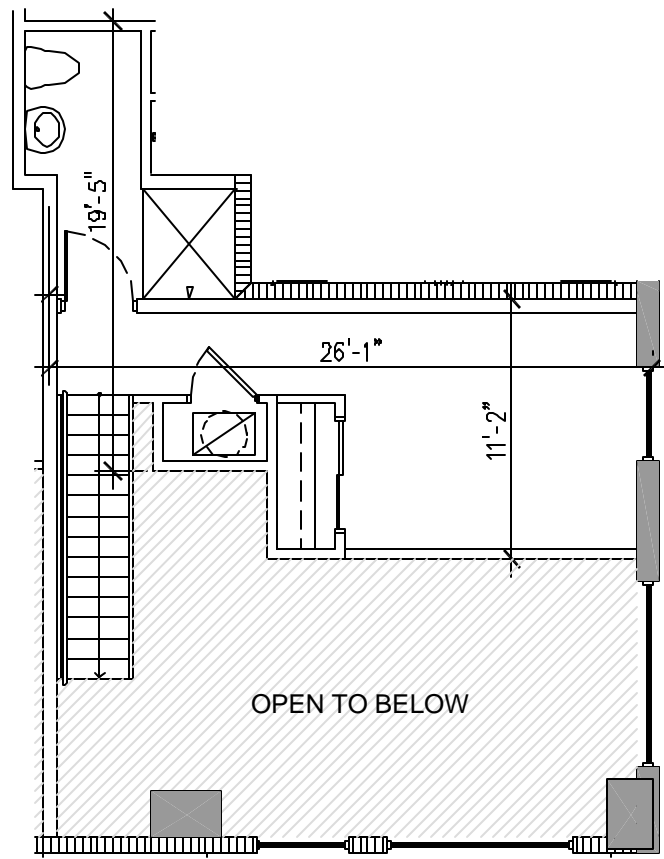


Ground Level



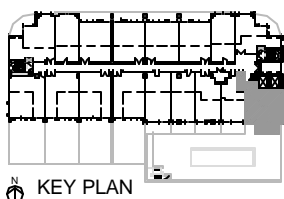
Mezzanine Level

LOFT L(T):

ENTRY LEVEL:	745 S.F.	69.2 S.M.
MEZZ. LEVEL:	330 S.F.	30.7 S.M.
<b>TOTAL:</b>	<b>1075 S.F.</b>	<b>99.9 S.M.</b>
BALCONY:	189 S.F.	17.6 S.M.

LOFT L:

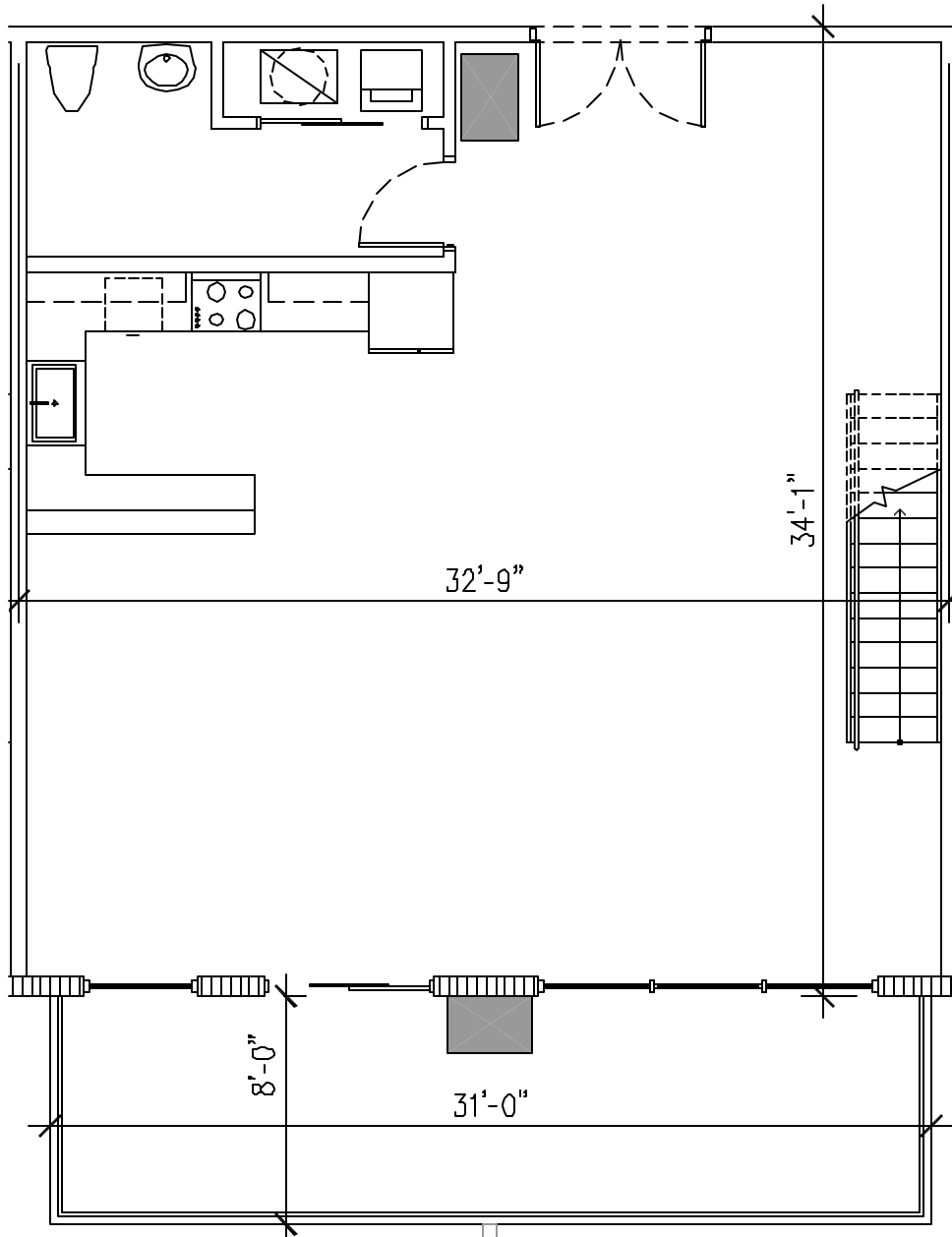
ENTRY LEVEL:	745 S.F.	69.2 S.M.
MEZZ. LEVEL:	330 S.F.	30.7 S.M.
<b>TOTAL:</b>	<b>1075 S.F.</b>	<b>99.9 S.M.</b>
BALCONY:	140 S.F.	13.0 S.M.



KEY PLAN

**The Filling Station  
LOFT L(T) & L**

The stated dimensions are measured to the exterior boundaries of the exterior walls and the centerline of interior demising walls and in fact vary from the dimensions that would be determined by using the description and definition of the "Unit" set forth in the Declaration (which generally only includes the interior airspace between the perimeter walls and excludes interior structural components). All dimensions are approximate, and all floor plans and development plans are subject to change.

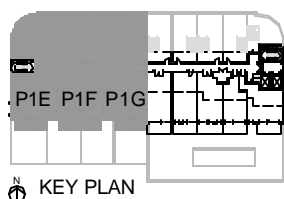


Ground Level

LOFT P1E		
ENTRY LEVEL:	1126 S.F.	104.6 S.M.
MEZZ. LEVEL:	456 S.F.	42.4 S.M.
<b>TOTAL:</b>	<b>1582 S.F.</b>	<b>147.0 S.M.</b>
TERRACE:	967 S.F.	89.8 S.M.
BALCONY:	176 S.F.	16.4 S.M.
MEZZ. BALCONY:	117 S.F.	10.9 S.M.

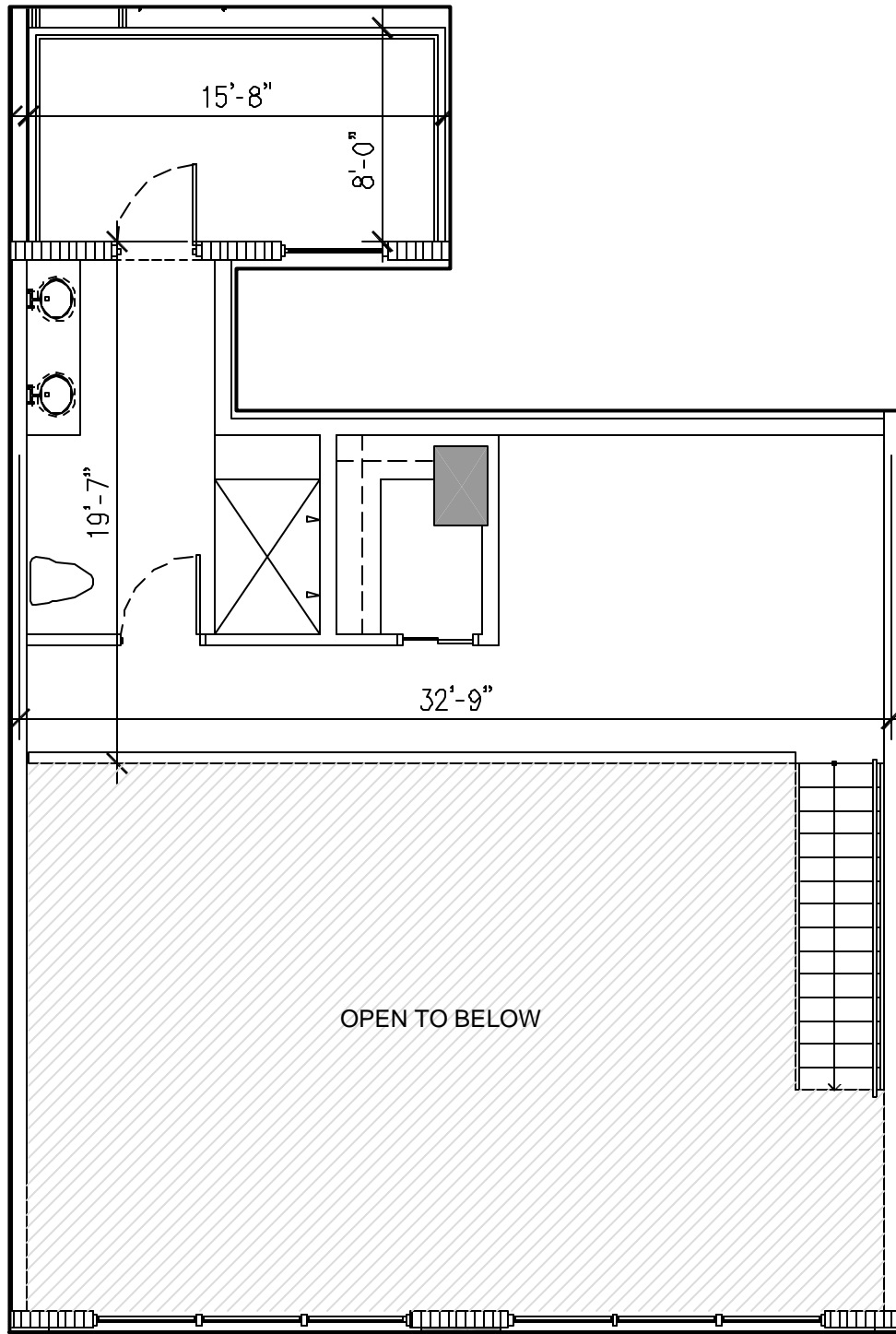
LOFT P1F		
ENTRY LEVEL:	1121 S.F.	104.1 S.M.
MEZZ. LEVEL:	475 S.F.	44.1 S.M.
<b>TOTAL:</b>	<b>1596 S.F.</b>	<b>148.2 S.M.</b>
TERRACE:	1127 S.F.	104.7 S.M.
BALCONY:	251 S.F.	23.3 S.M.
MEZZ. BALCONY:	257 S.F.	23.9 S.M.

LOFT P1G		
ENTRY LEVEL:	1099 S.F.	102.1 S.M.
MEZZ. LEVEL:	467 S.F.	43.4 S.M.
<b>TOTAL:</b>	<b>1566 S.F.</b>	<b>145.5 S.M.</b>
TERRACE:	1105 S.F.	102.7 S.M.
BALCONY:	178 S.F.	16.5 S.M.
MEZZ. BALCONY:	257 S.F.	23.9 S.M.



## The Filling Station LOFTS P1 & P2 UNITS E, F, G

The stated dimensions are measured to the exterior boundaries of the exterior walls and the centerline of interior dividing walls and in fact vary from the dimensions that would be determined by using the description and definition of the "Unit" set forth in the Declaration (which generally only includes the interior airspace between the perimeter walls and excludes interior structural components). All dimensions are approximate, and all floor plans and development plans are subject to change.

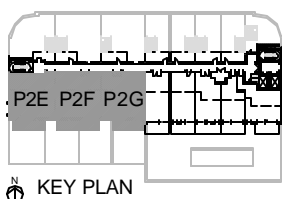


Mezzanine Level

LOFT P2E		
ENTRY LEVEL:	1126 S.F.	104.6 S.M.
MEZZ. LEVEL:	456 S.F.	42.4 S.M.
<b>TOTAL:</b>	<b>1582 S.F.</b>	<b>147.0 S.M.</b>
BALCONY:	182 S.F.	16.9 S.M.
MEZZ. BALCONY:	117 S.F.	10.9 S.M.

LOFT P2F		
ENTRY LEVEL:	1121 S.F.	104.1 S.M.
MEZZ. LEVEL:	475 S.F.	44.1 S.M.
<b>TOTAL:</b>	<b>1596 S.F.</b>	<b>148.2 S.M.</b>
BALCONY:	251 S.F.	23.3 S.M.
MEZZ. BALCONY:	257 S.F.	23.9 S.M.

LOFT P2G		
ENTRY LEVEL:	1099 S.F.	102.1 S.M.
MEZZ. LEVEL:	467 S.F.	43.4 S.M.
<b>TOTAL:</b>	<b>1566 S.F.</b>	<b>145.5 S.M.</b>
BALCONY:	178 S.F.	16.5 S.M.
MEZZ. BALCONY:	257 S.F.	23.9 S.M.



**The Filling Station  
LOFTS P1 & P2  
UNITS E, F, G**

The stated dimensions are measured to the exterior boundaries of the exterior walls and the centerline of interior demising walls and in fact vary from the dimensions that would be determined by using the description and definition of the "Unit" set forth in the Declaration (which generally only includes the interior airspace between the perimeter walls and excludes interior structural components). All dimensions are approximate, and all floor plans and development plans are subject to change.